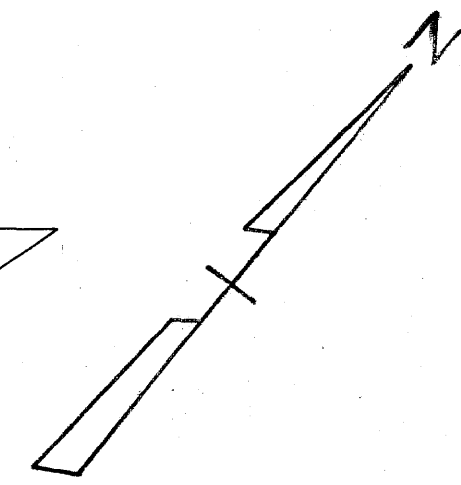
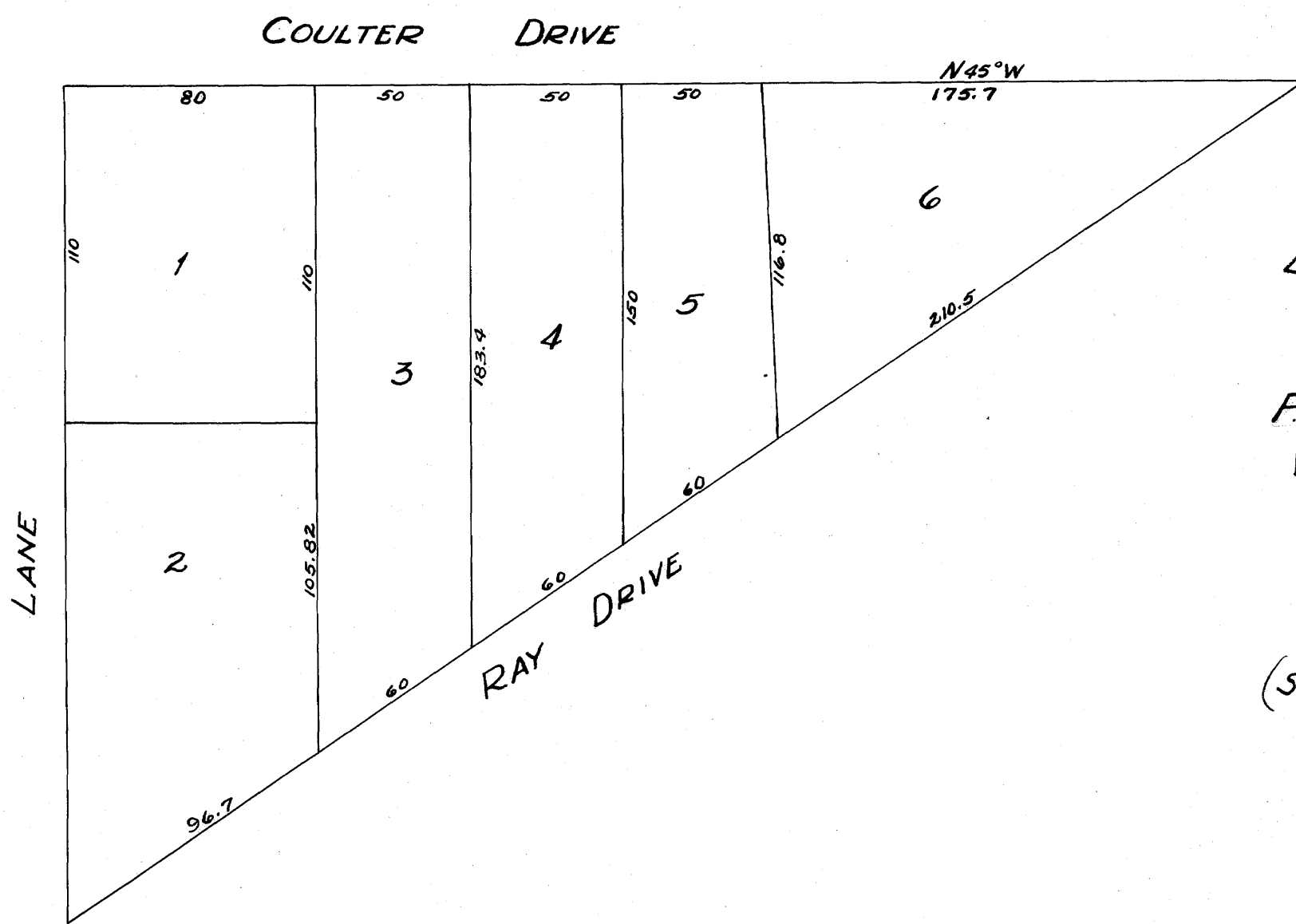


175.7  
230  
105.7

105.8  
92.3  
13.5



F.D. SMITH SUBDIVISION OF BLK. 10  
WELCH ADD'N - BRYAN TEXAS  
D.R. 101 Pg. 517  
Scale: 1" = 50'

(See Resubdivision)  
Subsequent Sheet  
D.R. 107, Pg. 154  
Nov. 22, 1939

328

on balance  
and disjoints